



49 Weir Road

, Kibworth Beauchamp, LE8 0LQ





Asking Price £300,000

Positioned on an elevated corner plot, this beautifully presented two-bedroom semi-detached home boasts a modern, open-plan layout that's ideal for contemporary living. The ground floor features a stylish and spacious dining kitchen flowing seamlessly into the lounge—perfect for entertaining. Upstairs, you'll find two generously sized double bedrooms and a recently refitted, high-spec bathroom. With gardens to the front, side, and rear, plus a private driveway, this property is a fantastic opportunity for first-time buyers, downsizers, or investors alike. Early viewing is strongly recommended to avoid disappointment.

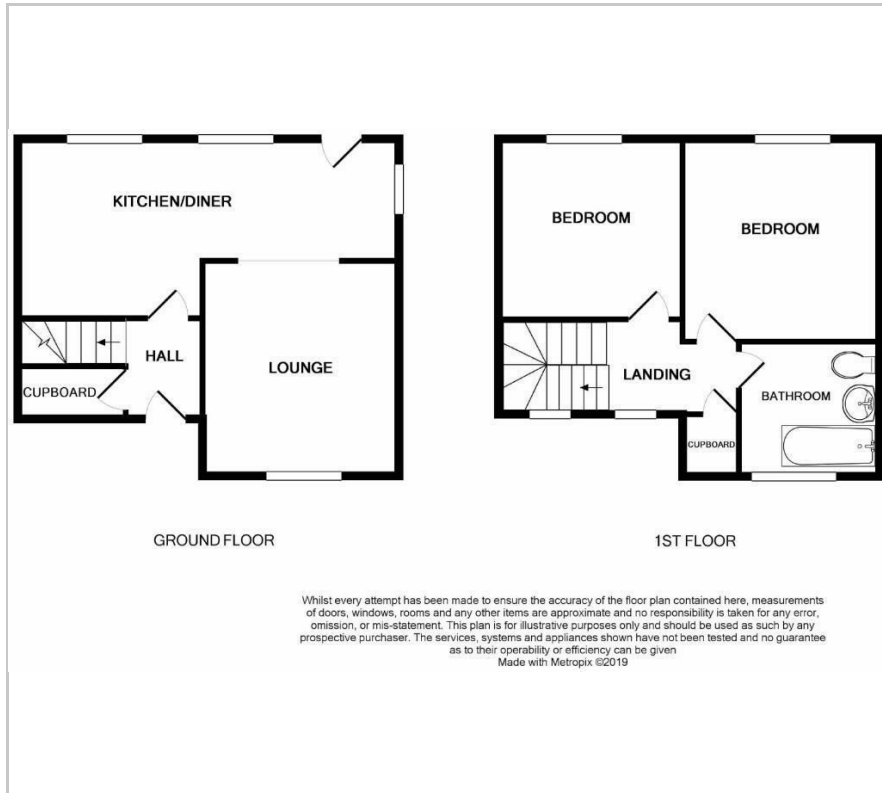
- Elevated corner plot position with front, side, and rear gardens
- Stylish open-plan ground floor layout
- Bright and spacious lounge with feature exposed brick fireplace
- Two generous double bedrooms, both with charming cast iron fireplaces
- Well-maintained gardens and rear patio ideal for entertaining
- Perfect for first-time buyers, downsizers, or buy-to-let investors
- No Chain

Viewing

Please contact our Berkley Leicester Office on 0116 2544755 if you wish to arrange a viewing appointment for this property or require further information.

 2
  1
  1
  D

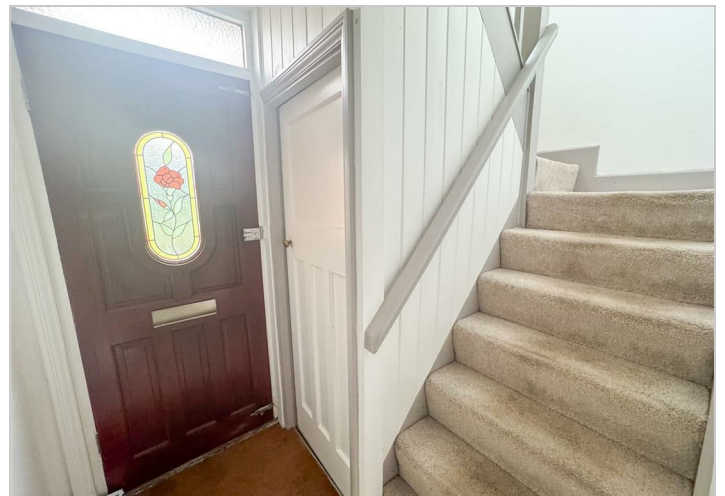
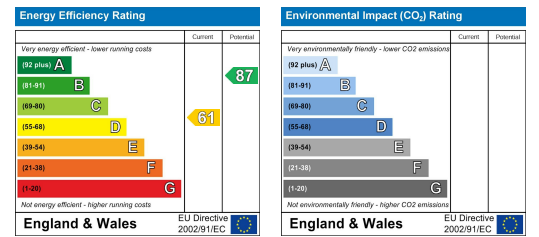
Floor Plan



Area Map



Energy Efficiency Graph



These particulars, whilst believed to be accurate are set out as a general outline only for guidance and do not constitute any part of an offer or contract. Intending purchasers should not rely on them as statements of representation of fact, but must satisfy themselves by inspection or otherwise as to their accuracy. No person in this firm's employment has the authority to make or give any representation or warranty in respect of the property.